



TPMS1309P05

User Manual

Suzhou Sate Auto Electronic Co., Ltd

www.sate.com.cn

Table of Contents

Introduction to the System -----3

Installation of the System-----4

Functions of the System-----7

Programming of the System Functions -----10

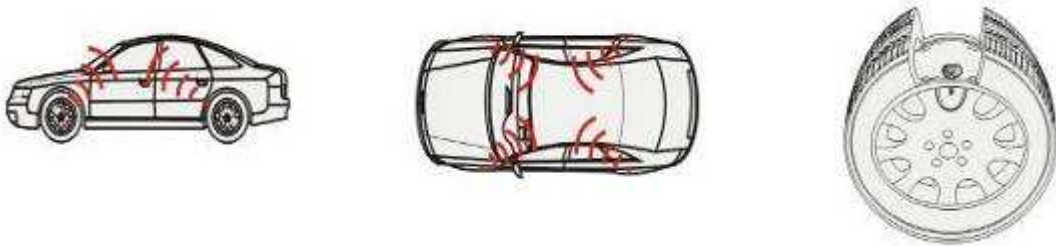
Specifications-----14

Introduction to S&T TPMS1309P05

The system consists of 1 display, 1 receiver and 4 internal sensors.

The sensor is installed inside the tire to replace the original tire valve, senses the pressure and temperature all the time and sends the pressure and temperature information to the receiver through RF. The receiver can pick up and deal with the data, then display the data on the screen. The display can issue different alarms if the tire pressure is under an improper state based on the standard pressure so as to notify the driver to treat the problem.

Through TPMS, the driver can keep the tire at a proper pressure so as to avoid excess gasoline consumption and keep the vehicle under an easily controlled state.



Working principle of TPMS

Installation of the System

1. Group parts



Embeddable Display



Display



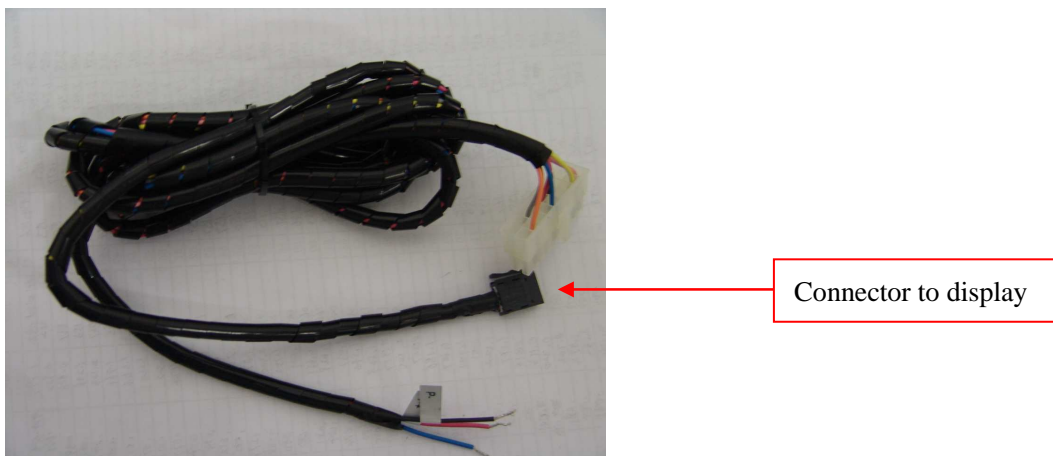
Sensor



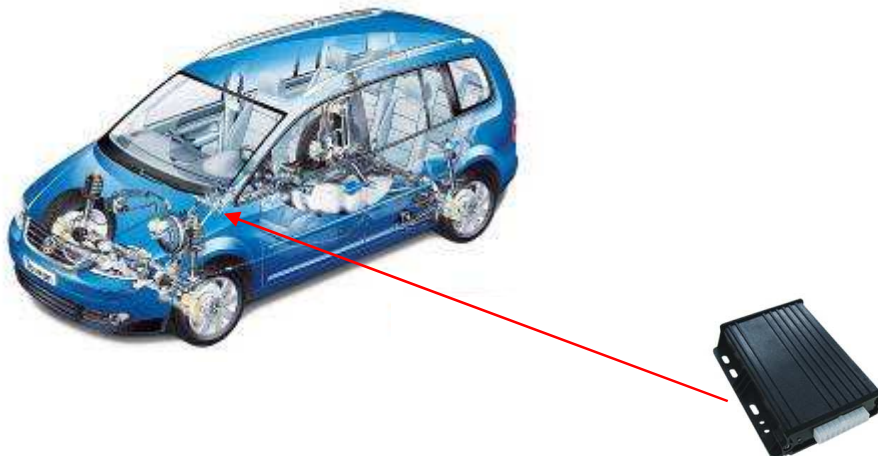
Connection wire (power and signal)

2. Installation of Receiver and Display

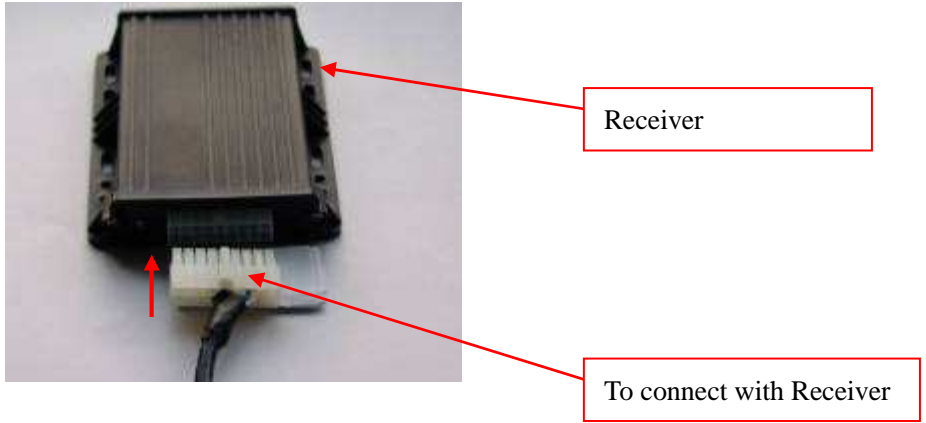
2.1 Connect the wire cluster with the Display via the connector, as shown below



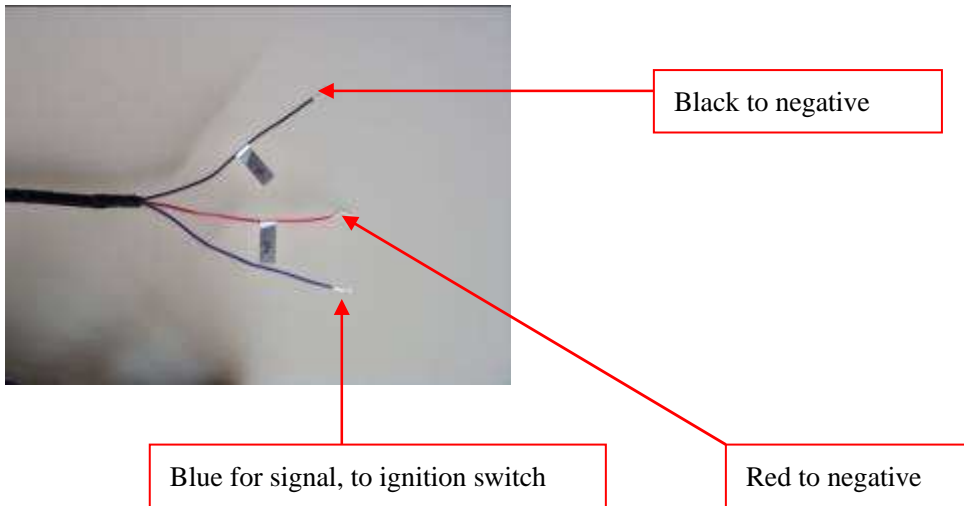
2.2 Fix the Receiver inside the dashboard.



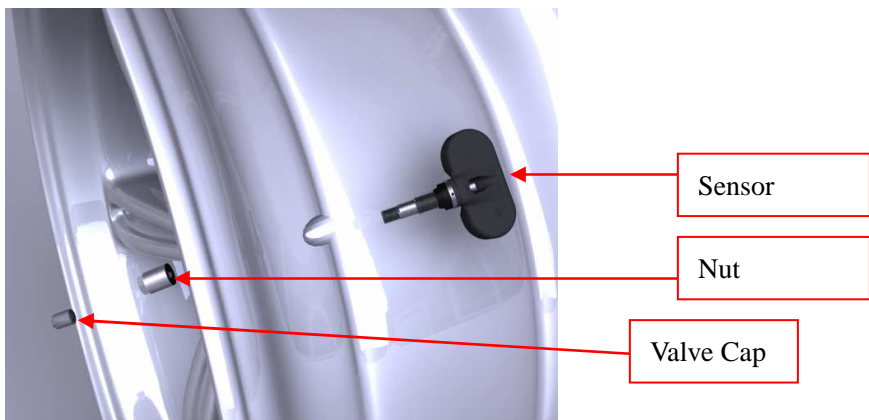
2.3 Plug the white connector of connection wire to the receiver.



2.4 Connect the power wires to the vehicle power supply according to correct polarity, as shown below:



3. Installation of Sensor



Functions of the System

1. High Pressure Alarm

Display Mode:



Function: The system will issue a High Pressure Alarm when the tire pressure is 25% higher than the standard.

Alarm mode: The alarm lamp, back light, High Pressure Warning Icon and the Audible alarm turn on together.

Treatment: The audible alarm will stop after 10 seconds automatically or press any key to silence the audible alarm. The red alarm lamp remains on and the display reverts to the normal mode. Then the user should adopt a proper measure to adjust the tire until the pressure reaches a proper level. The red alarm lamp goes off only when the tire pressure returns to the normal level.

2. Low Pressure Level 1 Alarm

Display Mode:



Function: The system will issue a Low Pressure Level 1 Alarm when the tire pressure is 12.5% lower than the standard.

Alarm mode: The alarm lamp, back light, Low Pressure Level 1 Warning Icon and the Audible alarm turn on together.

Treatment: The audible alarm will stop after 10 seconds automatically or press any key to silence the audible alarm. The red alarm lamp remains on and the display reverts to the normal mode. Then the user should adopt a proper measure to inflate the tire until the pressure reaches the proper level. The red alarm lamp goes off only when the tire pressure returns to the normal level.

3. Low Pressure Level 2 Alarm

Display Mode:



Function: The system will issue a Low Pressure Level 2 Alarm when the tire pressure is 25 % lower than the standard.

Alarm mode: The alarm lamp, back light, Low Pressure Level 2 Warning Icon and the Audible alarm turn on together.

Treatment: The audible alarm will stop after 10 seconds automatically or press any key to silence the audible alarm. The red alarm lamp remains on and the display reverts to the normal mode. Then the user should adopt a proper measure to inflate the tire until the pressure reaches the proper level. The red alarm lamp goes off only when the tire pressure returns to the normal level.

4. Low Pressure Level 3 Alarm

Display Mode:



Function: The system will issue a Low Pressure Level 3 Alarm when the tire pressure is 50 % lower than the standard.

Alarm mode: The alarm lamp, back light, Low Pressure Level 3 Warning Icon and the Audible alarm turn on together.

Treatment: The audible alarm will stop after 10 seconds automatically or press any key to silence the audible alarm. The red alarm lamp remains on and the display reverts to the normal mode. Then the user should adopt a proper measure to inflate the tire until the pressure reaches the standard level, or use the spare tire and go to workshop to check the tire. The red alarm lamp goes off only when the tire pressure returns to the standard level.

5. High Temperature Alarm

Display Mode:



Function: when the temperature inside a tire exceeds 75C, the system will issue a High Temperature Alarm.

Alarm mode: The alarm lamp, back light, High Temperature Alarm Icon and the Audible alarm turn on together.

Treatment: The audible alarm will stop after 10 seconds automatically or press any key to silence the audible alarm. The red alarm lamp remains on and the display reverts to the normal mode. Please slow down or pull over at a safe place, then adopt a proper measure to cool down the tire. When the tire temperature returns to normal level, the alarm lamp turns off automatically.

6. Quick Leak Alarm

Display Mode:



Function: The system will issue a Quick Leak Alarm when the pressure difference exceeds 1.4 psi within 8 seconds.

Alert Mode: The alarm lamp, back light, Fast Leak alarm icon and audible alarm turn on together, the tire icon flashes continuously.

Treatment: The audible alarm will stop after 10 seconds automatically or press any key to silence the audible alarm. Meanwhile slow down the car and stop at a safe place for inspection.

7. Sensor Trouble Alarm

Display Mode:



Function: When one of the sensors fails to work, or the receiver cannot receive the data because of the RF interference for a certain time, the sensor trouble alarm will be issued.

Alarm Mode: The alarm lamp, back light, the sensor trouble alarm icon and the audible alarm turn on together, the display shows “---”.

Treatment: The audible alarm will stop after 10 seconds automatically or press any key to silence the audible alarm. The red alarm lamp remains on and the display reverts to the normal mode.

Note: When communication between the Sensor and Monitor returns to normal state, the red alarm lamp turns off automatically.

IV Programming of System Functions

1. Buttons on Display



2. Description of Index Interfaces

There are totally 3 interfaces:

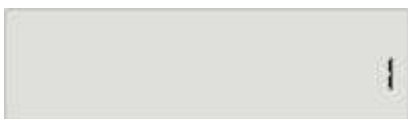
Interface 1: to program / set the sensor ID. When replace a sensor, you will need to operate under this menu. For each complete kit, the display and sensors are pre-programmed at factory, so you don't need to re-program when install the system.

Interface 2: to program the standard pressure for each tire. The standard pressure recommended by the car manufacturer can be found in the car user manual, inside of the oil tank or the door frame on the driver's side.

Interface 3: to exchange the sensors by programming on monitor when rotate tires

3. ID Programming

3.1 Press E key for 3 seconds to enter the programming mode as shown below.

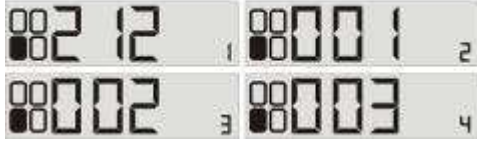
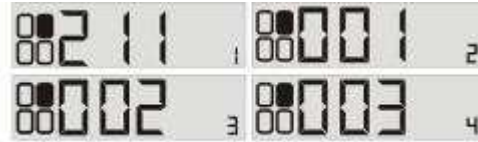
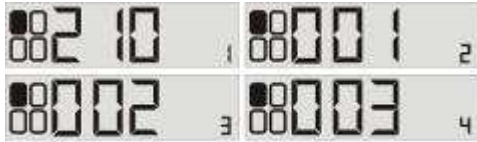


3.2 Press E again to enter the ID programming and inquiry mode.



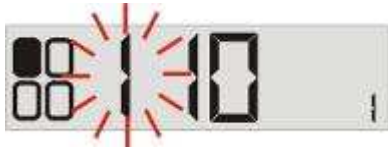
3.3 Press S key to check through the ID numbers of the tires.

Each sensor ID has 12 digits which are divided into 4 groups. Each group has 3 digits, as shown below:



3.4 For example, change the first 3 digits of front left tire sensor ID from 110 to 101:

When it displays “110”, press E key for 3 seconds, the first digit starts flashing, then press E key to confirm and switch to next digit position.



3.5 Now second digit flashes, press S key to switch the number to 0.



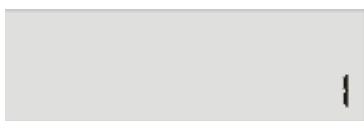
3.6 Then press E key to confirm and third digit starts flashing, press S key to switch the number to

1. And then press E key to confirm the setting and no digit will flash.

The change of other ID number can be finished in the same way as above.

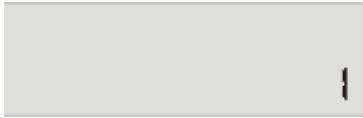


3.7 After check the ID of the four sensors, press S key to switch to index interface 1, as shown below.

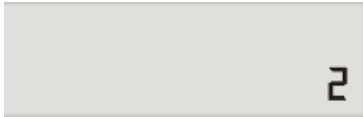


4. Programming of standard pressure

4.1 Press E key for 3 seconds to enter the programming mode, as shown below.



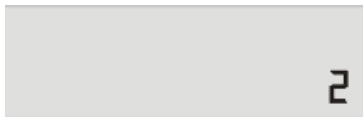
4.2 Press S key to switch to index interface 2, as shown below:



4.3 Press E key to enter, it will display the default standard pressure for front left tire. Press S key to switch between the four tire positions.



4.4 Press S key to return to the index interface.



For example, set the standard pressure of front left tire to 36psi on the monitor. Operation steps are as follows:

4.5 At the interface showing standard pressure of front left tire position, press E key for 3 seconds to enter the programming mode:

Then the tenth digit starts flashing, press E key to confirm and switch to next position. And then press S key to switch the number to 6. Finally press E key again and the letter “E” will flash, and press E key to confirm and finish the programming of the front left tire position.

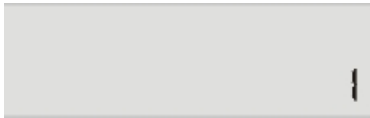




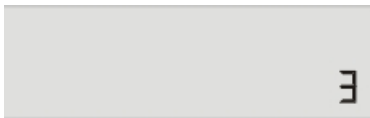
5. Rotating tires without removing sensors

Function: when rotate tires, no need to remove the sensor installed inside the tire. Through programming of sensor on the monitor can finish exchange of sensors between different tires.

5.1 Press E key for 3 seconds to enter the programming mode, as shown below:



5.2 Press S key to switch to index interface 3 for sensor rotation as shown below:

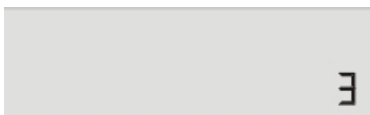
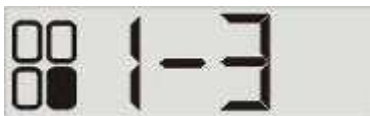


5.3 Then press E key, the first digit flashes which means the tire position to be rotated. Press S key to select the tire to be rotated.



5.4 Press E key to confirm, and another digit will flash, press S key to select the tire position to be rotated.

Then press E key to return to the index interface.



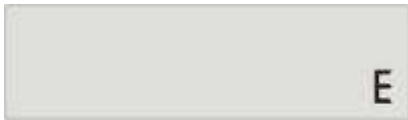
6. Exit the programming menu

6.1 After enter a programming mode, if you want to exit, press S key to switch the letter at bottom

right corner to “E”.



6.2 Then press E key again to return to the normal working mode.



Specifications

1.1 Display

| NO. | Item | Parameter |
|-----|-----------------------------|----------------------|
| 1 | Size | 73.8mm*28.5mm*37.1mm |
| 2 | Weight | 32g |
| 3 | Working current | 25mA |
| 5 | Operating Temperature Range | -30°C~75°C |

1.2 Receiver

| NO. | Item | Parameter |
|-----|-----------------------------|-------------------|
| 1 | Size | 117mm*96mm*23.7mm |
| 2 | Weight | 135g |
| 3 | Input voltage | DC12V |
| 4 | Working current | 70mA |
| 6 | Operating Temperature Range | -40°C~+85°C |
| 7 | Mid-frequency | 434.1MHz |
| 8 | Receiving Sensitivity | -105dBm |

Connection wires on Receiver

| Wire color | Definition |
|------------|--------------------------|
| BLACK | GND |
| RED | Positive 12V |
| BLUE | Signal (ignition switch) |

1.3 Sensor

| NO. | Item | Parameter |
|-----|----------------------------------|---|
| 1 | Size | 63mm*29.5mm*17mm |
| 2 | Weight | 43g |
| 3 | Operating Temperature Range | -40℃~+125℃ |
| 4 | Mid-frequency | 434.1MHz |
| 5 | Transmitting Power | -20 dBm (e.r.p. effective power) |
| 6 | Pressure Monitoring Range | 0~800kpa |
| 7 | Pressure Monitoring Precision | ±10kpa |
| 8 | Temperature Monitoring Range | -40℃~+125℃ |
| 9 | Temperature Monitoring Precision | ±2℃ |
| 10 | Battery Life | 10 years (under specified working mode) |