



# **TPMS1209T08-R**

## **USER MANUAL**

**Suzhou Sate Auto Electronic Co., Ltd**

[www.sate.com.cn](http://www.sate.com.cn)

## Table of Contents

I. TPMS1209T08-R, Full-time Direct TPMS-----	3
II. Parts of TPMS1209T08-R -----	3
III. Installation and Programming of TPMS1209T08-R Monitor-----	5
1. Installation of Monitor-----	5
2. Programming of Monitor-----	6
2.1 Programming of Transmitter ID-----	6
2.2 Standard Pressure Programming-----	8
2.3 System Time Programming-----	10
2.4 Programming of Pressure Unit -----	11
2.5 Deletion of Transmitter ID-----	12
IV. Installation of TPMS1209T08-R Transmitter-----	13
1. Installation of Transmitter-----	14
2. Installation of Security Lock-----	15
V. System Function of TPMS1209T08-R -----	16
1. Full-time Monitoring -----	16
2. High Pressure Alarm -----	16
3. Low Pressure Level 1 Alarm -----	17
4. Low Pressure Level 2 Alarm-----	18
5. Low Pressure Level 3 Alarm-----	18
6. High Temperature Alarm -----	19
7. Quick Leak Alarm -----	20
8. Transmitter Trouble Alarm-----	20
VI. TPMS1209T08-R Auxiliary Functions in Normal Mode-----	21
Alarm Record Inquiry-----	21
VII. Specifications -----	23
VIII. Frequently Asked Questions -----	24
IX. Warranty Term -----	26
X. Important Notes -----	27

## **I. TPMS1209T08-R, FULL-TIME DIRECT TPMS**

TPMS1209T08-R is direct tire pressure monitoring system for trucks which includes 1 monitor, 1 external antenna kit and 2 to 38 transmitters and it can support monitoring of up to 38 tires. The transmitter can be screwed onto the tire valve and then senses the pressure and temperature all the time and send data to monitor by RF. The monitor can receive and deal with the data, then display the pressure and temperature on the screen. The monitor can issue different alarms if the tire pressure is at an improper level, so as to notify the driver to treat the problem timely.

Through TPMS1209T08-R, the driver can keep the tire running under a proper pressure so as to avoid excess gasoline consumption and keep the vehicle in an easily controlled state.

## **II. Parts of TPMS1209T08-R**

1 Monitor

Transmitter for each tire position purchased

Transmitter lock for each tire position purchased

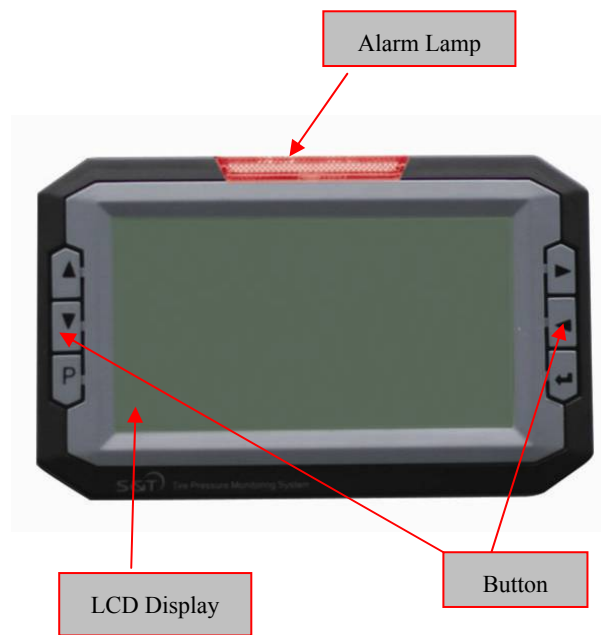
1 monitor mounting bracket

1 external antenna kit

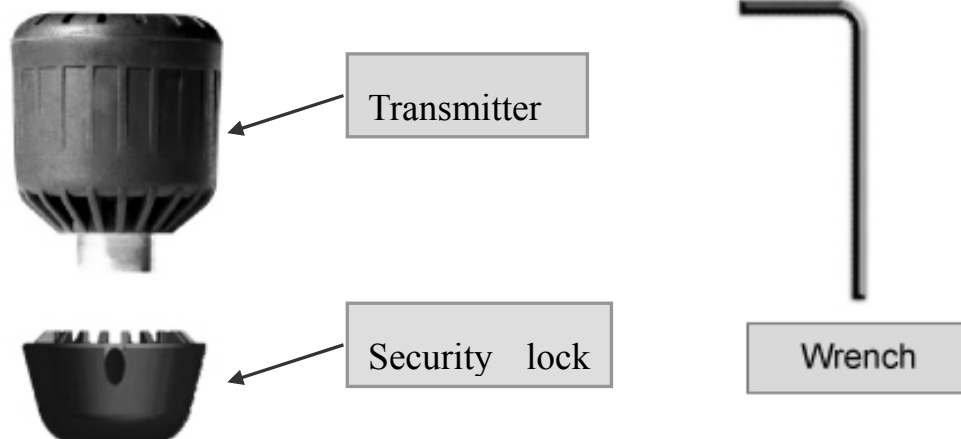
2 Wrenches

1 User Manual

## Monitor



## Transmitter



## III. Installation and Programming of TPMS1209T08-R

### 1. Installation of Monitor

1.1 Connect the mounting bracket and the monitor.

1.2 Install monitor onto dashboard or the windshield as needed.



1.3 The monitor power wire consists of 3 different colors of wires. The Black wire should be connected to the ground, Red wire to vehicle's continuous power supply, Blue wire to ignition switch, when switched to "ON", blue wire will have the power.

The monitor starts to work after it is powered. At this time the monitor cannot receive any information as the transmitters are not installed. The screen shows "NSP", which means there are "No Sensors Programmed".



## **2 Programming of Monitor**

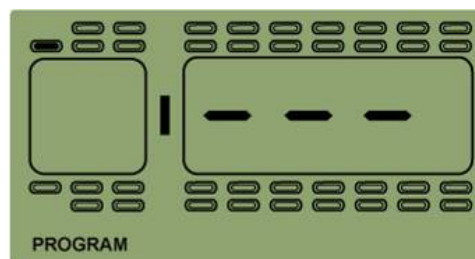
Through the monitor, the user can program up to 38 transmitters ID numbers and the standard pressure for each wheel. Operation steps are as following:

## 2.1 Programming of Transmitter ID

When the monitor is powered for the first time, the screen shows “NSP”, which means there is no transmitter programmed into it. If the user wants to program a new transmitter into the monitor, the operation should be finished in programming mode. At this time, make sure the transmitter to be programmed has not been screwed onto the valve yet. Screw on transmitters until the programming has been finished and the monitor returns to normal mode.

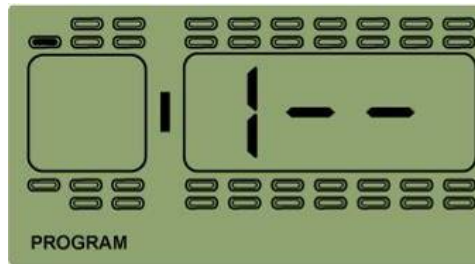
Each transmitter has 4 groups of ID, for example when program the transmitter with ID of 001 001 001 158 to front right tire position, the user only needs to input the last 3 digits “158”. Monitor will record the rest 3 groups of ID automatically. Operation steps are as following:

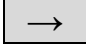
1. After monitor is powered, the screen will display “NSP”, press P for 3 seconds to access the system programming mode, the first interface is for ID programming as shown below:

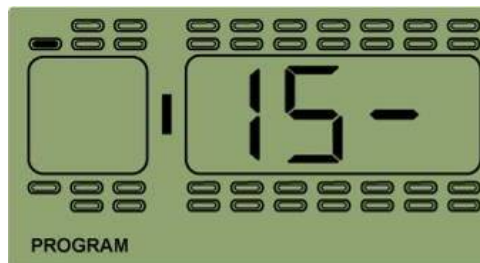


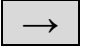
2. Press any of the four arrow keys to choose the tire position which needs to be programmed with a transmitter.
3. Then press S for 3 seconds to start programming and the digit flashes,

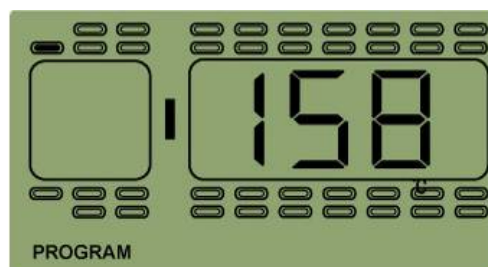
then press up or down arrow key to adjust the number.



4. Once finish programming of the first digit, press  to start programming the second digit which flashes. Press up or down arrow key to adjust the number.



5. Press  again to program the third digit which flashes. Press up or down arrow key to adjust the value.



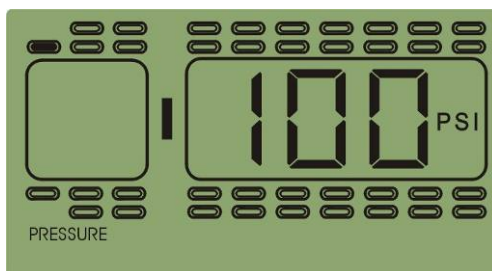
6. When finish programming these 3 digits, press S for 3 seconds to save with the screen flashes twice, beep buzzes twice. Then it will automatically switch to next tire position.

7. Repeat the above operations to program ID of other transmitters.

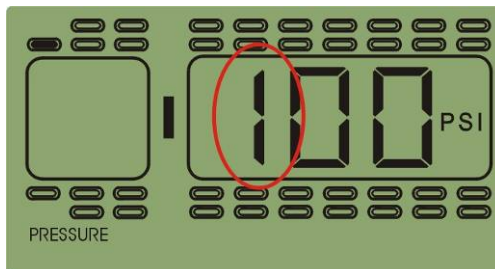
## 2.2 Standard Pressure Programming

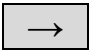
For example, set the standard pressure of front right tire to 105 psi:

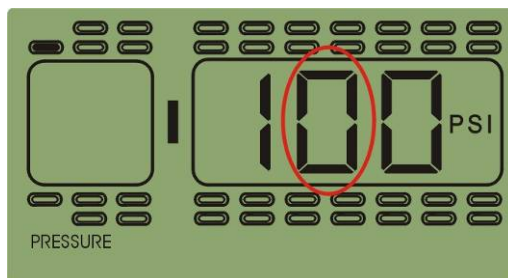
1. When finish programming ID, press P to access the standard pressure programming mode.
2. Then press any of the four arrow keys to choose the desired tire position.



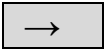
3. Then press S for 3 seconds to set the first digit which flashes. Press up or down arrow key to adjust the value to 1.

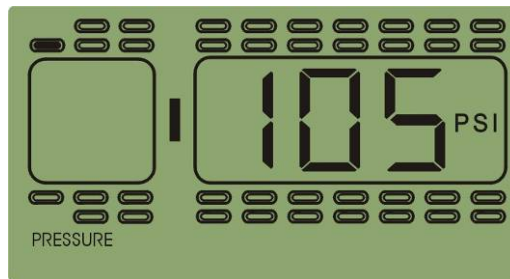
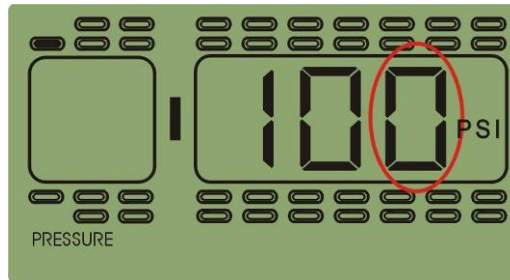


4. Once finished programming the first number, press  to program the second digit which flashes and then press up or down arrow key to adjust the value to 0.





5. Once finished programming the second number, press  to program the third digit which flashes and then press up or down arrow key to adjust the value to 5. Then press S for 3 seconds to save the setting.




**Note:** The default standard pressure is set to 100 psi in factory.

### 2.3 System Time Programming


Function: The system clock was preset in the factory. It is the base of the alarm record, user can check the current date and time as follows:

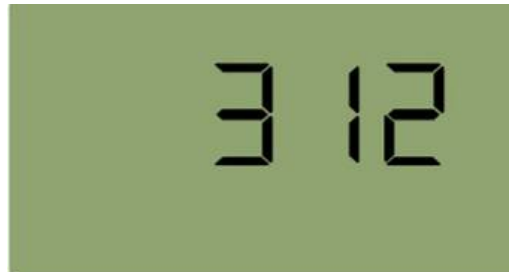
1. When finish programming the standard pressure, press P to access interface for inquiry and programming of time/date, the first interface displays the year, 1 07 stands for the year 2007:




2. Press  key to access the second interface, 211 stands for November as shown below:




3. Press the  key to access the third interface, 312 stands for 12th day as shown below:

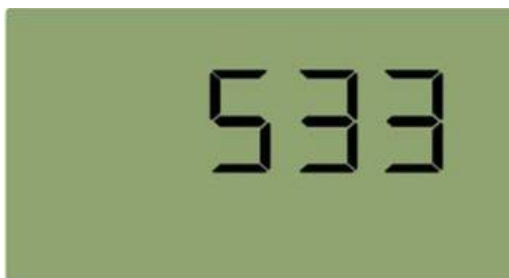


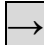
4. Press the  key to access the fourth interface, 416 stands for 16 O'clock as shown below:



5. Press the  key to access the fifth interface, 533 stands for 33 mins.

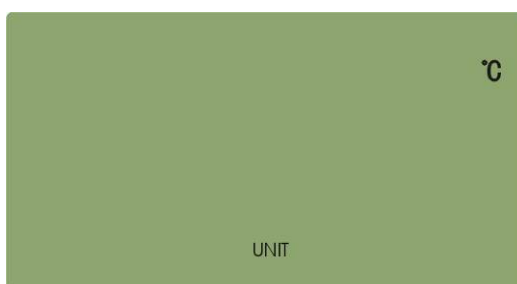
As shown below:



Under any interface of system time inquiry, press S for 3 seconds to start programming. For example change the year to “09”, under the year interface, press S for 3 seconds, the second digit flashes, press up or down arrow key to adjust the value. Then press  key, the third number flashes, then press the up or down arrow key to adjust the value to “9”. At last press S for 3 seconds to save the change with screen flashes twice and beep buzzes twice. Then it automatically switches to next interface for programming.

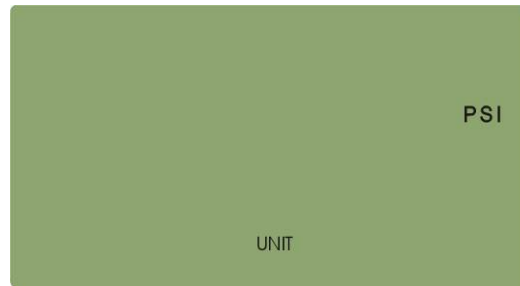
## 2.4 Programming of Temperature and Pressure Unit

1. After program the system time, press P to access interface for programming temperature and pressure unit. The first interface displays the temperature unit. As shown below:



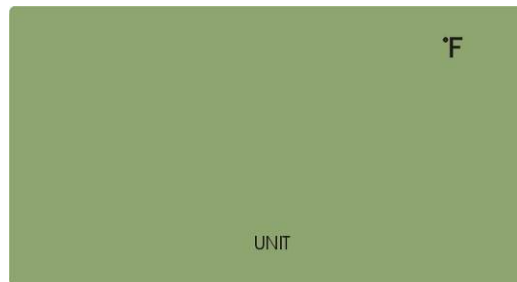
At this time, press up or down arrow key to switch to the pressure unit

interface. As shown below:



2. Under any interface displaying temperature or pressure, press S key for 3 seconds to start programming. Take change the temperature unit as an example: under the temperature unit interface, press S key for 3 seconds, the temperature unit “°C” starts flashing. Press up or down arrow key to select the needed temperature unit.

After select the desired unit, press S key for 3 seconds to save with the beep buzzes twice. Temperature unit will stop flashing.



## 2.5 Deletion of transmitter ID

1. When finish programming temperature and pressure unit, press P to access the transmitter deletion interface. Only the programmed and received transmitter will be shown and only the last 3 ID digits will be shown:



2. Press any of the four arrow keys to locate the tire position to be deleted.
3. Press S key for 3 seconds to delete with the screen flashes twice and beep buzzes twice to confirm the deletion. Then it automatically switches to next transmitter location.

**Note:** After programming, press P key for 3 seconds to return to normal mode.

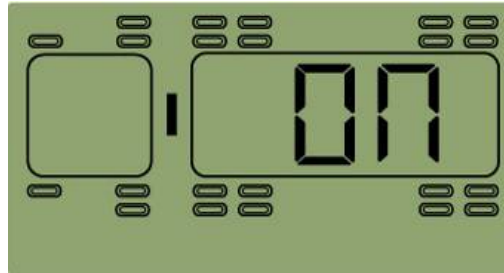
#### **IV. Installation of TPMS1209T08-R Transmitter**

Before install the transmitter, make sure the transmitter has been programmed into the monitor and monitor is under normal mode. If no transmitter is programmed or transmitter signal is not received after program, the screen will display “NSP”.



When the transmitter is screwed onto the valve according to the programmed position, the monitor will receive the signals in a certain time and show the transmitter location, pressure, temperature information.

When all programmed transmitters are received by the monitor and the pressure or temperature is at proper level, the screen displays “ON”.



### **1. Installation of Transmitter:**



1. Remove the current tire valve cap.
2. Inflate the tire to the standard pressure recommended by the manufacturer or pressure needed by the user.

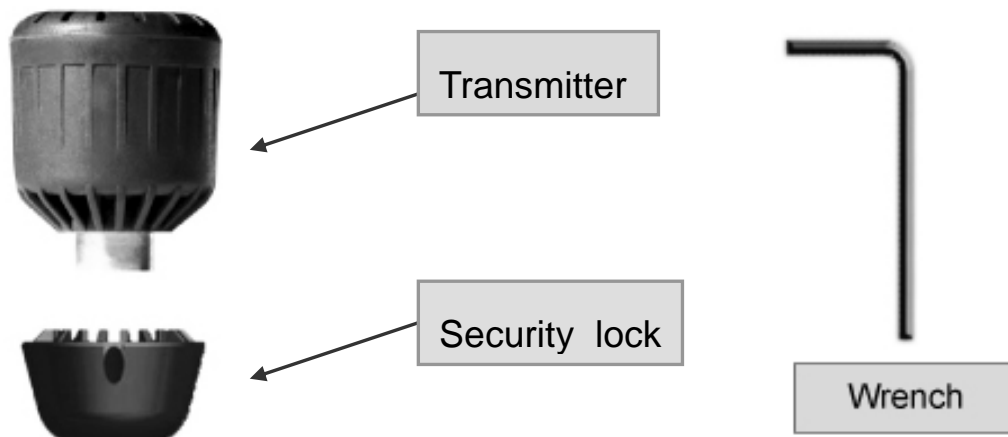
**Note: If the user chooses to use the lock, please refer to the below part of lock installation. Security Lock and Transmitter should be installed at the same time.**

3. Screw the transmitter onto the tire valve.
4. Use soapy solution to check whether there is air leakage caused by improper installation or the seal of the Transmitter.
5. Once screwed onto the tire, transmitter can sense the pressure and send signals to the monitor, the information will be received within about 6 mins.

- Note: 1. Please set the standards pressure of each tire on monitor before install the transmitter. The standard pressure for each tire location has been preset to 100PSI in factory.
2. If one of your transmitters is broken or lost, user only needs to replace this one.

## 2. Installation of Security Lock

Each transmitter has a security lock to prevent it becomes loose or falls off. The security lock has 3 screw holes with screws. As shown below:



### Installation step of the Security Lock

1. First connect the meshing parts of the Lock and the Transmitter to make them an integrated part, and then screw the Transmitter together with the Lock firmly onto the valve, as shown in the right figure.



2. Lock the Transmitter

Use the wrench to fasten the three bolts inside the sockets on the Lock.

Make sure they are fastened onto the valve. Then the Transmitter can not be easily screwed off unless the three bolts are screwed off by using the wrench.

### **How to inflate the tire with a locked Transmitter**

Before inflating the tire, please

1. Use the wrench to loose the three bolts.
2. Screw off the Transmitter.
3. Remove the Transmitter and the Lock.

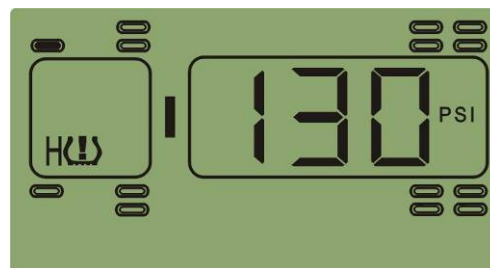
## **V. System Function of TPMS1209T08-R**

### **1. Full-time Monitoring**

Function: TPMS1209T08-R can monitor the tire pressure and temperature whether the vehicle is running or parked. Therefore to keep the driver informed of the tire state and realize full-time monitoring.

### **2. High Pressure Alarm**

Display mode:



Function: the system will issue the high pressure alarm when the tire pressure is 25% higher than the standard.

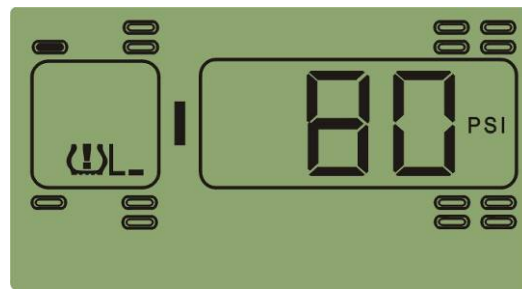


Alarm mode: the alarm lamp flashes, high pressure warning icon, tire position icon and the audible alarm turn on together.

Treatment: press any key to stop the audible alarm. The red alarm lamp remains on and the display reverts to the normal mode. At this time user should properly adjust the tire pressure to the normal level. The red alarm lamp turns off only when the tire pressure returns to the normal level.

### 3. Low pressure level 1 alarm

Display mode:



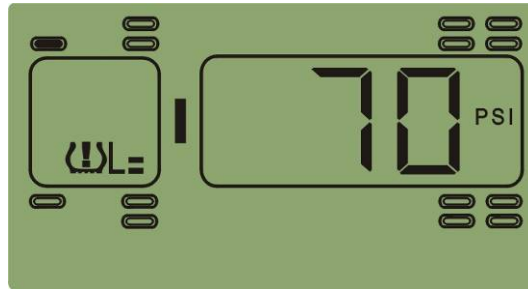
Function: the system will issue low pressure level 1 alarm when the tire pressure is 12.5% lower than the standard.

Alarm mode: the alarm lamp flashes, low pressure level 1 alarm icon, tire position icon and the audible alarm turn on together.

Treatment: press any key to stop the audible alarm. The red alarm lamp remains on and the display reverts to the normal mode. At this time the user should adjust the tire pressure to normal level as soon as possible. The red alarm lamp turns off only when the tire pressure returns to normal level.

#### 4. Low pressure level 2 alarm

Display mode:



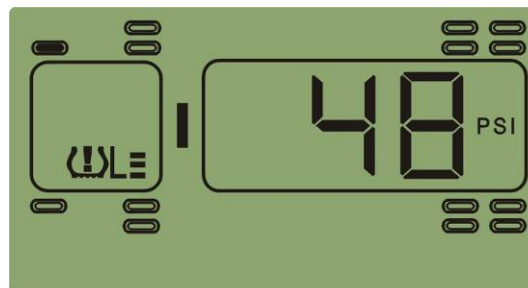
Function: the system will issue low pressure level 2 alarm when the tire pressure is 25% lower than the standard.

Alarm mode: the alarm lamp flashes, low pressure level 2 alarm icon, tire position icon and the audible alarm turn on together.

Treatment: press any key to stop the audible alarm. The red alarm lamp remains on and the display reverts to the normal mode. The user should slow down the vehicle and drive to a service shop to inflate the tire. The red alarm lamp turns off only when the tire pressure returns to normal level.

#### 5. Low pressure level 3 alarm

Display mode:



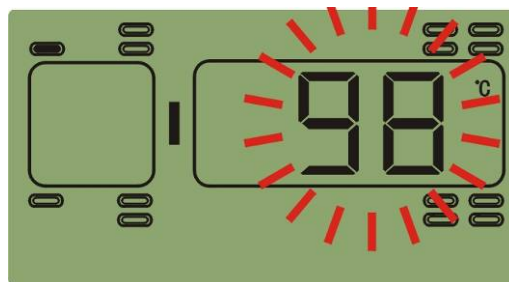
Function: the system will issue low pressure level 3 alarm when the tire pressure is 50% lower than the standard.

Alarm mode: the alarm lamp flashes, low pressure level 3 alarm icon, tire position icon and the audible alarm turn on together.

Treatment: press any key to stop the audible alarm. The red alarm lamp remains on and the display reverts to the normal mode. The user should slow down the vehicle and replace the tire with a spare tire. The red alarm lamp turns off only when the tire pressure returns to normal level.

## 6. High Temperature Alarm

Display Mode:



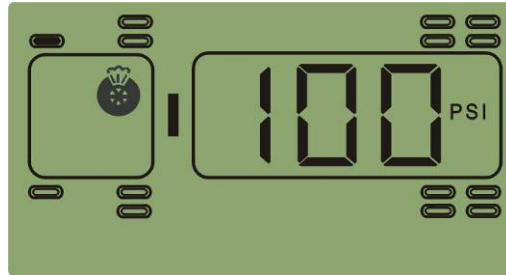
Function: When the temperature around the transmitter equals or exceeds 90°C, the system will issue the high temperature alarm.

Alarm Mode: the alarm lamp and temperature value flashes, tire position icon and the audible alarm turn on together.

Treatment: press any key to stop the audible alarm. The red alarm lamp remains on and the display reverts to the normal mode. The driver should slow down and properly cool down the tire. The red alarm lamp turns off automatically when the temperature returns to normal level.

## 7. Quick Leak Alarm

Display mode:



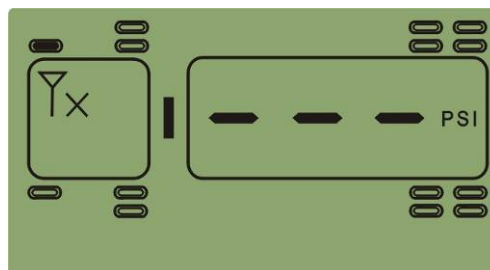
Function: the system will issue a quick leak alarm when the pressure drops more than 2.8 psi within 12 seconds.

Alarm mode: the alarm lamp flashes and the audible alarm turns on, the tire position icon flashes.

Treatment: press any key to stop the audible alarm and the system reverts to normal mode. Then slow down and check the correspondent tire.

## 8. Transmitter Trouble Alarm

Display mode:



Function: If one transmitter fails to work, or the monitor cannot receive the data because of the RF interference for 20 minutes, the system will issue a transmitter trouble alarm.

Alarm mode: the audible alarm turns on, the red alarm lamp flashes, and

transmitter trouble alarm icon appears.

Treatment: press any key to stop the audible alarm. Then the system reverts to the normal mode.

**Note:** The red alarm lamp turns off automatically when the communication between the transmitter and monitor recovers.

## VI. TPMS1209T08-R Auxiliary Functions in Normal Mode

### Alarm Record Inquiry

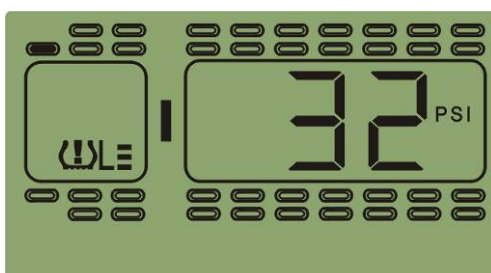
1. Under normal mode or pressure inquiry interface, press P and S at the same time for 3 seconds to access the alarm record inquiry interface.

The screen with “0” is the most recent alarm record, as shown below:

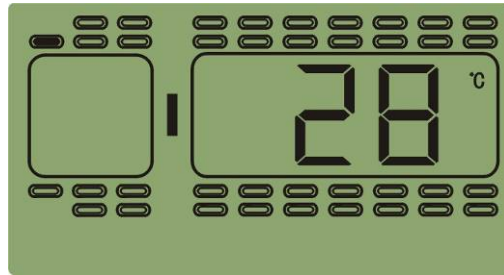


2. Under alarm record inquiry interface, Press → key to check through the record. If there is no operation within 3 seconds, it will automatically display the record data (pressure, temperature and time) in turn, each data displays 3 seconds.

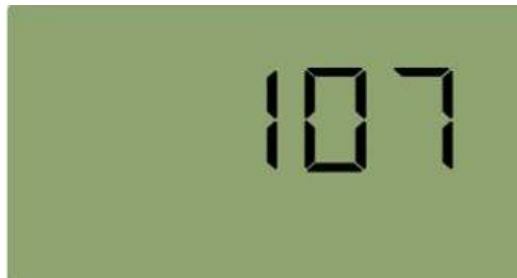
Pressure



Temperature



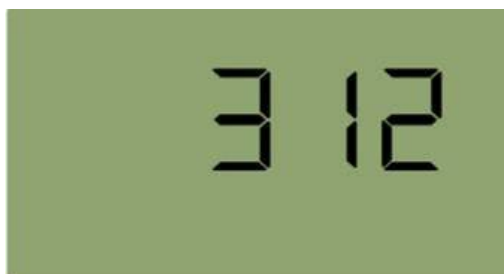
Time (year)



Time (month)



Time (date)



Time (hour)



Time (minute)



Then it will display the next alarm record in the same way as above.

4. Press P and S at the same time to exit.

## **VII. Specifications**

### **Monitor**

Modulation Type: FSK

Mid-frequency: 434.1 MHz

Receiving Sensitivity: -105 dBm

Input Voltage: 12V / 24V

Current: < 60mA

Operating Temperature: -30°C~70°C

Storage Temperature: -30°C~75°C

## **Transmitter**

Modulation Type: FSK

Mid-frequency: 434.1 MHz

Transmitting Power: 0 dBm

Input Voltage: 3.6V (Battery)

Operating temperature range: -40°C~125°C

Storage temperature range: -40°C~125°C

Transmitter weight: about 24 g

## **VIII. Frequently Asked Questions**

### **1. Why do I need to check the tires periodically with the TPMS system installed?**

Periodic check of the tire can keep the driver aware of the tires conditions and ensure driving safety.

### **2. Pressure alarm frequently occurs.**

The user can check if the standard pressure is suitable or not. If the standard pressure is too high or too low, re-set the standard pressure as per instructions on page 7 of USER MANUAL.

### **3. How long can the transmitter battery work?**

The transmitter battery can last about 5 years under normal conditions.

### **4. How to deal with the transmitter trouble alarm issued by monitor?**

If one transmitter fails to work, or the monitor cannot receive the



signals for 20 minutes because of the RF interference, the system will issue a transmitter trouble alarm. Once there is no interference, the system shall recover normal performance.

**5. Why the temperature sensed by the transmitter is quite different from the actual value?**

The temperature sensed by the transmitter is the environment temperature, not that inside the tire.

When vehicle runs the temperature around the transmitter will rise.

When there is high temperature alarm, please check if the tire is under abnormal condition which causes the wheel rim becomes very hot, and lower its temperature in time.

**6. The monitor displays nothing or abnormal code.**

Please check the power connection.

**7. When connected with vehicle's continuous power supply, will the power of storage battery be used up if the vehicle parks for a long period?**

The current draw of the monitor is only 50 mA under normal state and this can be ignored. However, if the vehicle will not be used for 2 or 3 months, the storage battery might be used up and the vehicle cannot be started. So we suggest the user remove the storage battery if the vehicle will not be used for a long period.

## **IX. Warranty Terms**

### **Valid Warranty Card**

1. The Warranty Card must be filled completely, signed by and sealed by the authorized distributors of Sate.
2. The Warranty Card is valid in the countries or regions where the purchase occurs.
3. The Warranty Service requires user to offer the Warranty Card and the original invoice.

### **Warranty Condition, Responsibility and Limitation**

1. The product warranty period is one year and is subject to the time marked on the invoice.
2. Any damages or faults due to improper use are not involved in the warranty commitment.
3. Users are not allowed to open, repair and refit the products by themselves, otherwise the warranty service will be invalid.
4. Injecting chemicals such as leak-proof glue into the tire will damage the Transmitters, and, affect the system operation. Do not use such articles after the TPMS is installed.
5. The warranty does not include replacement of the enclosure and display panel.
6. The warranty does not cover the product damage due to abrasion and corrosion.

## **X. Important Notes**

1. The Warranty Card must be filled completely and its number shall be quoted whenever the user requires the service.
2. Please inform Sate in case that the telephone number or address on the Warrant Card is changed.
3. The warranty responsibility is subject to the conditions and limitations specified in the *User Manual*.
4. TPMS1209T08-R monitor should be connected with the continuous power supply and installed by the professional. S&T is not responsible for the vehicle circuit damage or accident caused by wrong installation or improper use of the system.
5. S&T TPMS can perform full-time monitoring function, but cannot avoid all unexpected accidents.